

Door Hardware







One of the first impressions you will notice about a home, is the front door. On this beautiful front door, needs to be the perfect hardware to complement the home's style and architecture. This not only includes the locking mechanism but

all the accessories such as a doorbell cover, a door knocker or a kick plate cover to the inside elements that may include a surface bolt or a door viewer. If you need a place to source all of these items and more, we need to be the first place you visit!

Door hardware not only starts at the front door and flows inside the home, it goes beyond just the bedroom or bathroom door lever, it may include elements such as beautiful pocket door locks, multi-point locking door trim, lift & slide door systems, and door stops. When building or remodeling your home and door hardware is on your list, trust your local showroom professionals to assist you or your builder in choosing the best hardware for your home. We have worked alongside Central Florida's most amazing custom home builders and interior design firms for almost 15 years, to bring their clients the most options for their door hardware. We have over 20 displays available in our showroom for our clients to see and touch some of the world's most beautiful door knobs, levers and door pulls. As professionals, we take the time to understand your needs, and the full scope of your project which often involves us walking your jobsite prior to ordering your hardware, to ensure that everything you need is provided.

We offer world class door hardware brands such as, Rocky Mountain Hardware, Baldwin Estate and Reserve Hardware, Sun Valley Bronze, Omnia, Ashley Norton Hardware, Emtek, FSB and more. We invite you to learn more about these manufacturers by visiting their websites by clicking on the images below.

When you are ready to begin your door hardware project, please [contact us](#) to schedule an appointment or visit the showroom to preview our selections prior to our meeting.

Visit our Door Hardware

Manufacturers

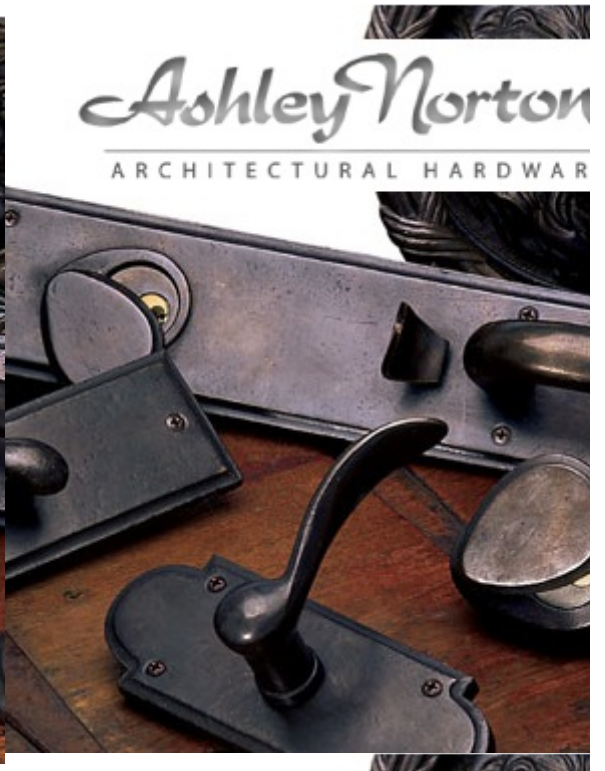


[Accurate Lock and Hardware](#)





[Acorn Manufacturing](#)



[Ashley Norton](#)



[Baldwin Hardware](#)

Bravura



[Bravura Brass](#)



[Bronzes de France](#)



[Deltana Architectural Products](#)



[Dubois](#)



Elmes, Inc.



[Emtek](#)



[Eric Morris & Company](#)

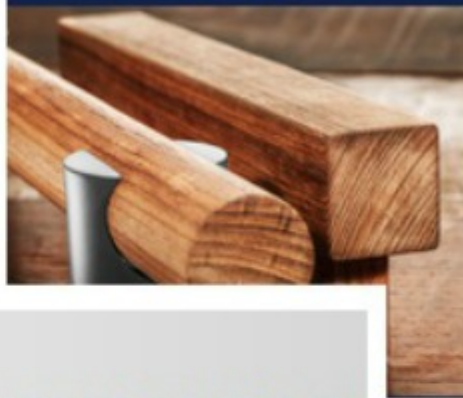


[Fersa](#)

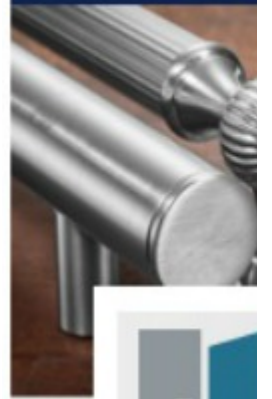
METAL



WOOD



MET



FI

FIRST IMPRESSIONS

I N T E R N A T I O N A L

FI



CRAFTSMANSHIP



ACRYLIC



CRAFTSM

[First Impressions International](http://www.firstimpressionsinternational.com)



[FSB](#)



[Hamilton Sinkler](#)



[INOX](#)



[Ives](#)



[L.E. Johnson Hardware](#)



[Metal Style Bouvet](#)



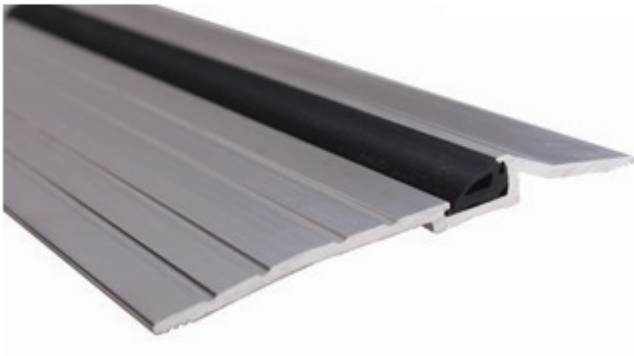
[Myterra Gemstone Hardware](#)



[Omnia](#)

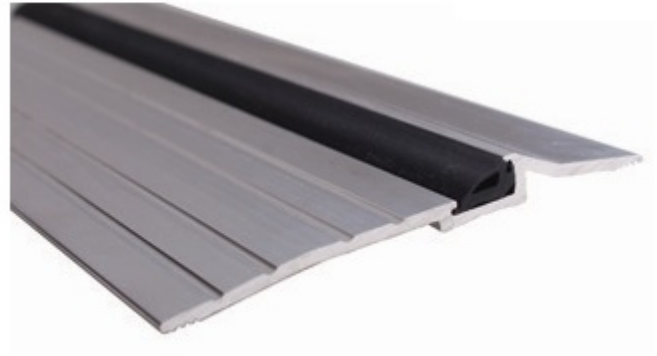
 **PEMKO**

ASSA ABLOY



 **PEMKO**

ASSA ABLOY



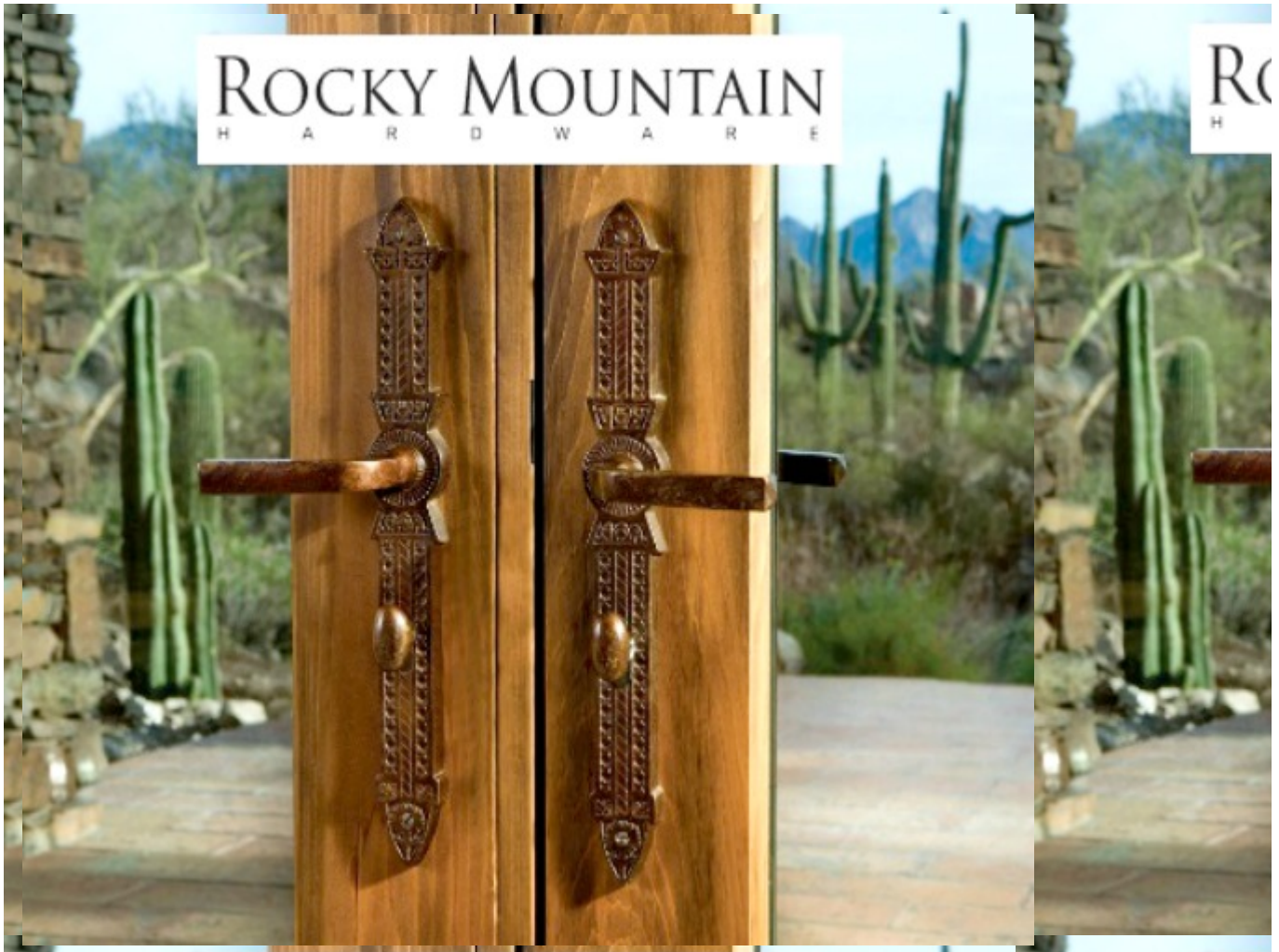
[Pemko](#)



RIXSON[®]

ASSA ABLOY

[Rixson](#)



[Rocky Mountain Hardware](#)



[SOSS](#)



[Turnstyle Designs](#)



[Valli & Valli](#)



[Water Street Brass](#)